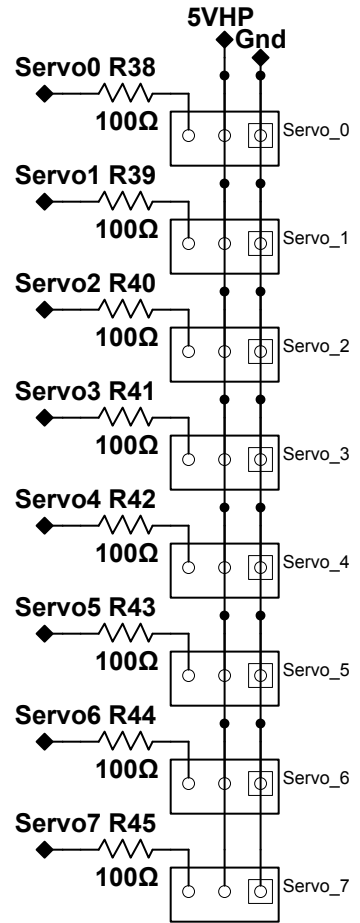
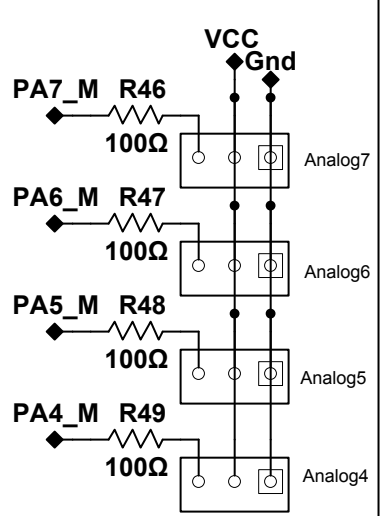


Servo Output from Co Processor



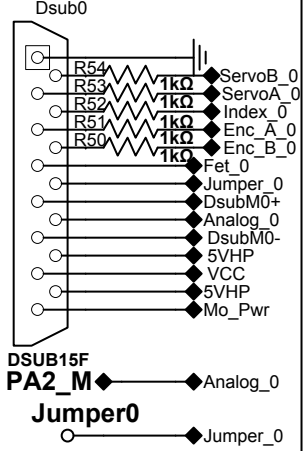
Analog Inputs to AVR ADC



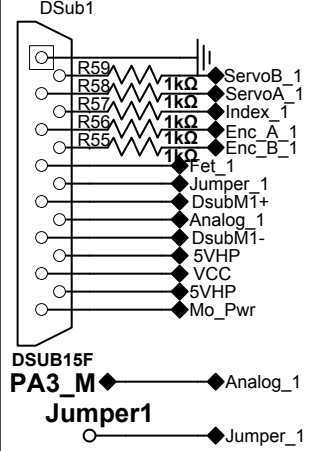
Servo Ports to Co Processor

- Servo0 ◆ PD2_C
- Servo1 ◆ PD3_C
- Servo2 ◆ PD4_C
- Servo3 ◆ PD5_C
- Servo4 ◆ PD6_C
- Servo5 ◆ PD7_C
- Servo6 ◆ PB0_C
- Servo7 ◆ PB1_C

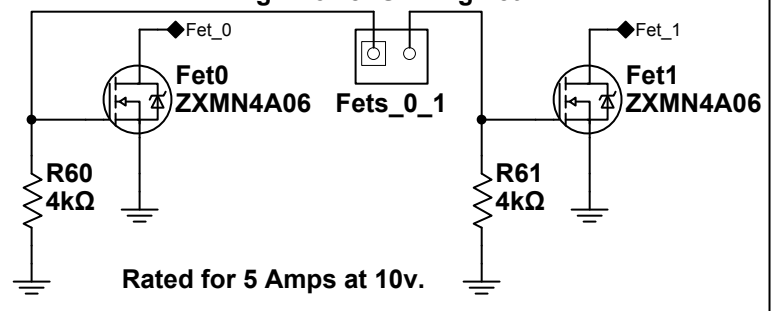
DSub Motor Port 0



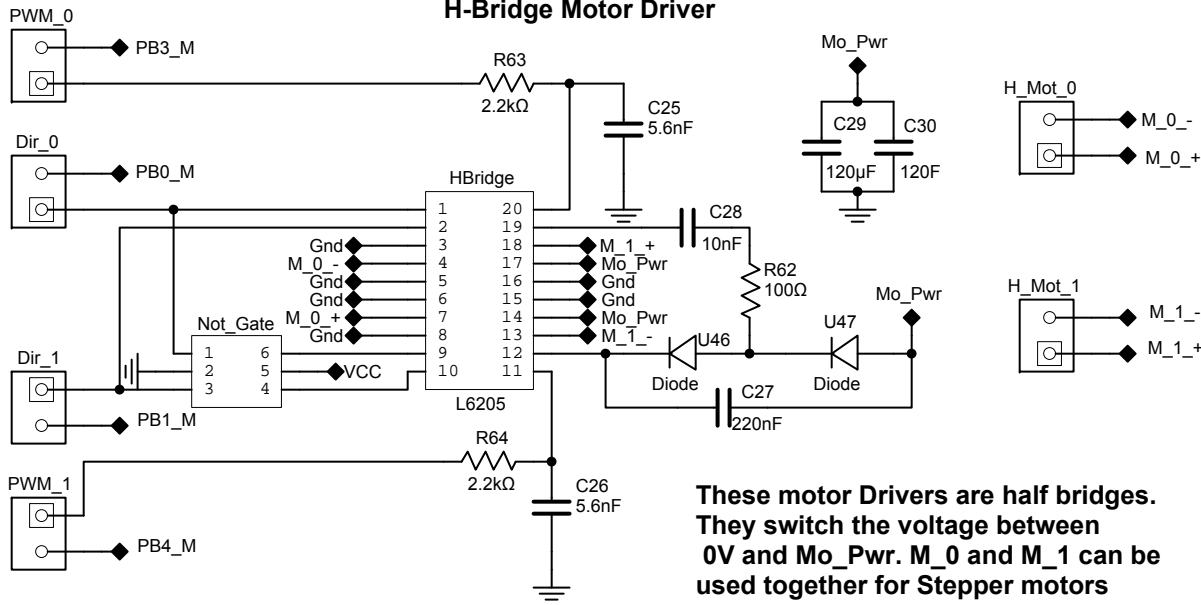
DSub Motor Port 1



High Power Sinking Fet



H-Bridge Motor Driver



These motor Drivers are half bridges. They switch the voltage between 0V and Mo_Pwr. M_0 and M_1 can be used together for Stepper motors

